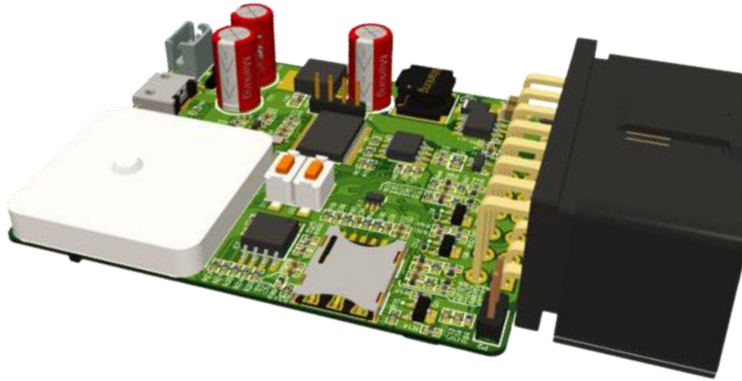




4G Battery Tracker (IoT)



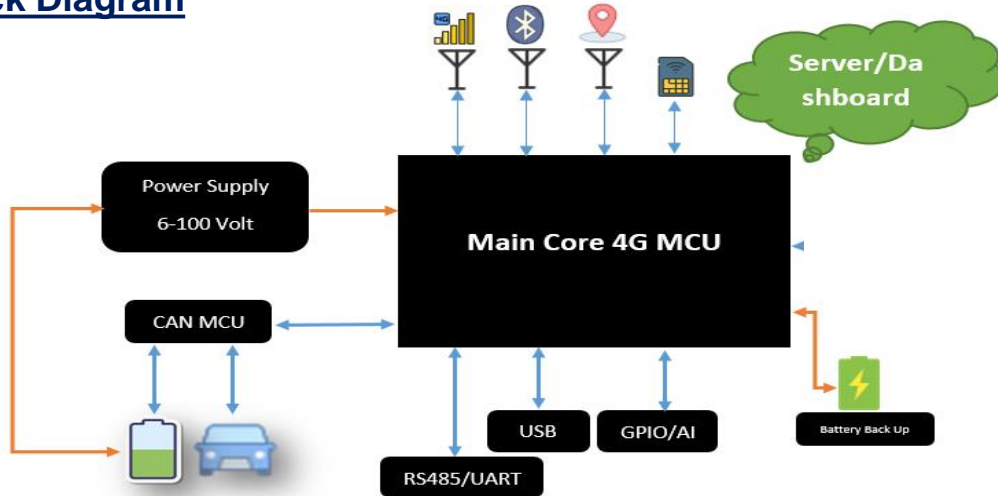
Specifications

GSM	LTE Cat 1 _ IoT Applications Support 4G Worldwide LTE, GSM/GPRS Coverage
GNS/GPS	For Accurate measurement Used Wi-Fi scanning (Optional) Accurate 2m Hot & Cold Sensing
Bluetooth	BLE 4.2 (Optional)
SIM	Standard Sim & E-Sim (Optional)
Antenna	Cellular Antenna: Internal only/External GNSS Antenna: Internal only
CAN	2.0B High Speed CAN
Serial Port	One for debugging Second for upgrading, USB
Internal Storage	Internal 1MByte, External 64MByte External Up to 256 Mbit (Optional)
IO	2 AI, 2 DI, 2 DO (Optional)
Protocols	TCP/UDP/PPP/NITZ/PING/FILE /MQTT/NTP/HTTP/HTTPS/SSL /FTP/FTPS/ CMUX/MMS
Led Indicator	CEL, GNSS, Power
Built in Battery	600mAh/400mAh ~55°C (Optional)
Power Supply	6-95V
Operating Temperature	-40 to 85°C
Humidity	94%
IP Grade	IP65 (Optional)
Dimension	70*50*20
Weight	158 grams



4G Battery Tracker (IoT)

Block Diagram



Key IoT Features

1. Real Time Battery Tracking
2. CAN Enabled
3. Data Logging
4. Vehicles Diagnostics over CAN & USB (Optional)
5. Firmware update over CAN & USB (Optional)
6. Tracking and Data Logging of Battery Pack with BMS
7. Wide input voltage range
8. FOTA
9. Configuration over GPRS/SERIAL/SMS
10. RS485 Enabled (Optional)
11. Bluetooth (Optional)
12. Wi-Fi Scan (Optional)
13. Internal Battery (Optional)
14. 3 LED Indication
15. Internal RTC
16. Lower power consumptions
17. Optional Device Alert
 - Geo-Fencing
 - Over Speed
 - Towing
 - Ignition
 - Power failure

