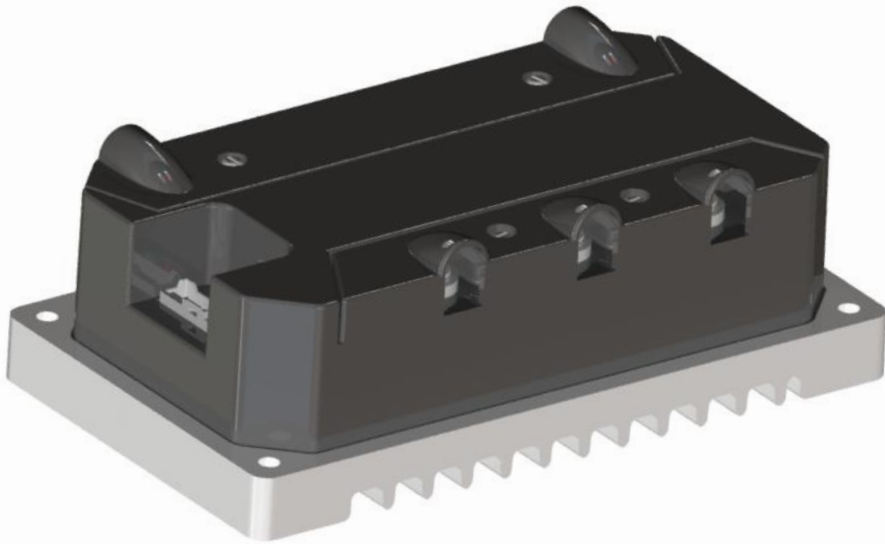




Motor Controller

IGT-MC2000W-V2.3_60V



Specifications

Parameter	Value
Peak Current	150 A rms
Nominal Current	50 A rms
Nominal Voltage	60 V
Maximum Voltage	72 V
For 150A Duration	60 Seconds
Motor Sensor Type	Hall Sensor
Motor Sensor Type	5 V
Throttle Voltage	5 V
Communication	CAN
Length	190 mm
Width	110 mm
Height	64 mm
Weight	1.14 kg

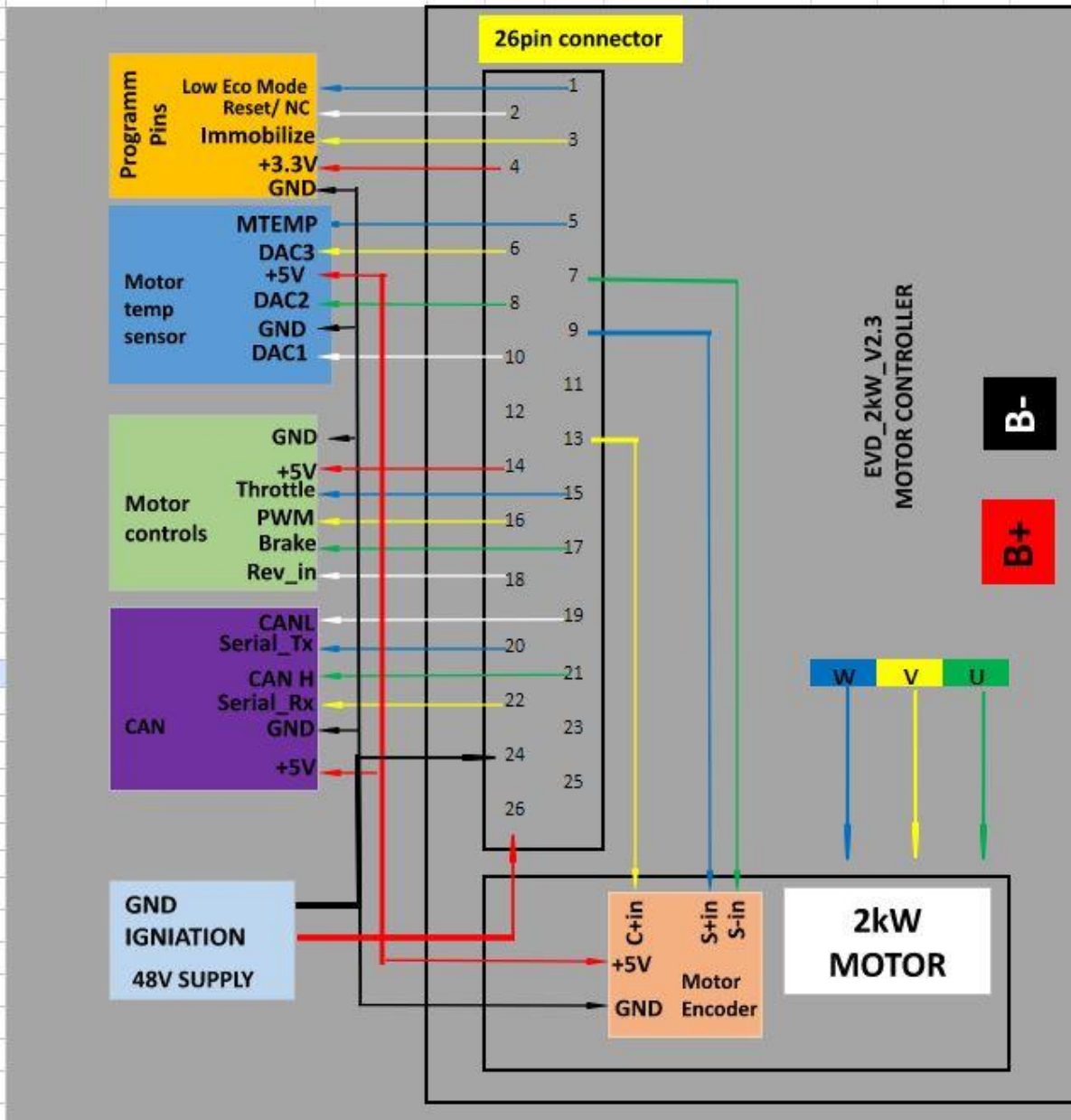




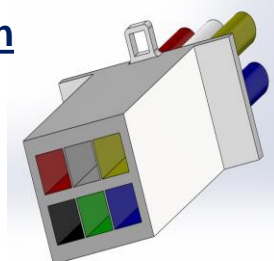
Motor Controller

IGT-MC2000W-V2.3_60V

26-Pin Harness Connection Details



Recommended wire connection on 6Pin automotive connector

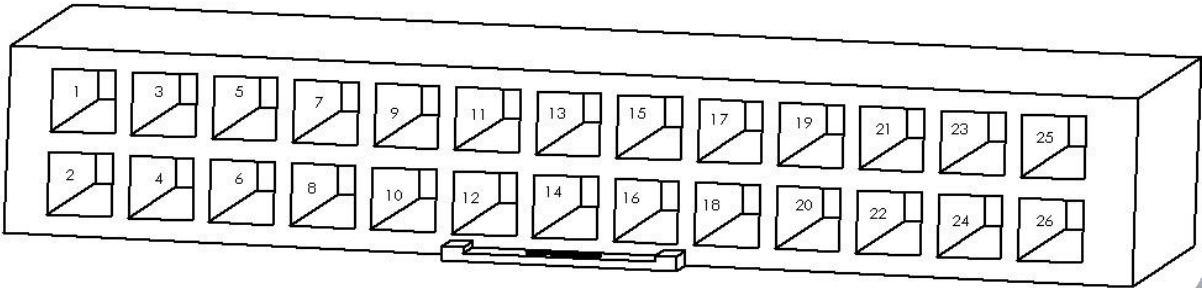




Motor Controller

IGT-MC2000W-V2.3_60V

26-Pin Connector Description Details



Pin No.	Function	Voltage range	Pin No.	Function	Voltage range
1	PGC1		14	Positive (+) 5V	5V
2	MCLR		15	Accn in (Throttle)	0-5V
3	PGD1		16	Eco/Sport (PWM)	0-5V
4	Hall Sensor	3.3V	17	Break_in	0-5V
5	Motor Temperature (MTEMP)	3.3V	18	Rev_in	0-5V
6	DAC 3	3.3V	19	CANL	0-5V
7	S -in	0-5V	20	Serial Tx	0-5V
8	DAC 2	3.3V	21	CANH	0-5V
9	S +in	0-5V	22	Serial Rx	0-5V
10	DAC 1	3.3V	23	Positive (+) 12V	12V
11	C -in	0-5V	24	Ground	0V
12	GND	0V	25	Ground	0V
13	C +in	0-5V	26	Ignition	48V

